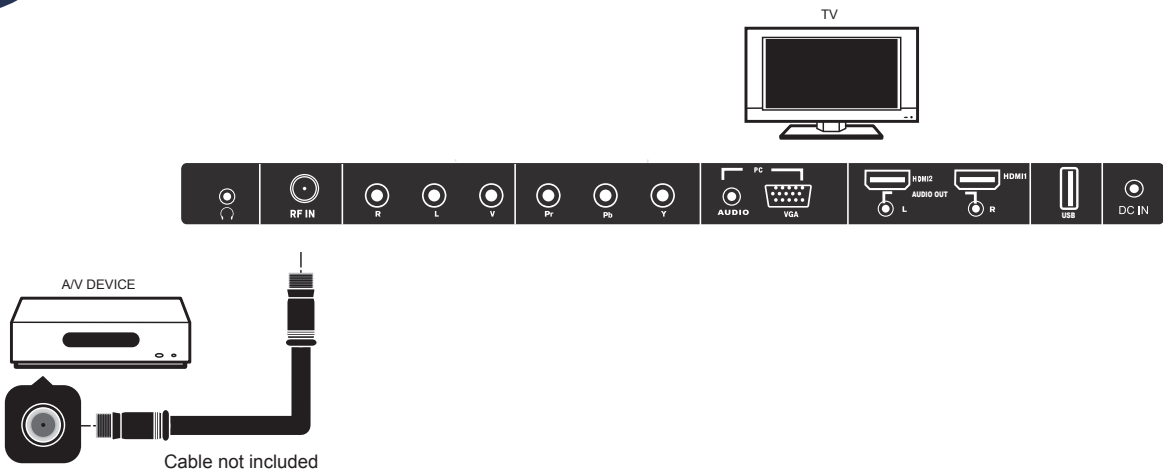
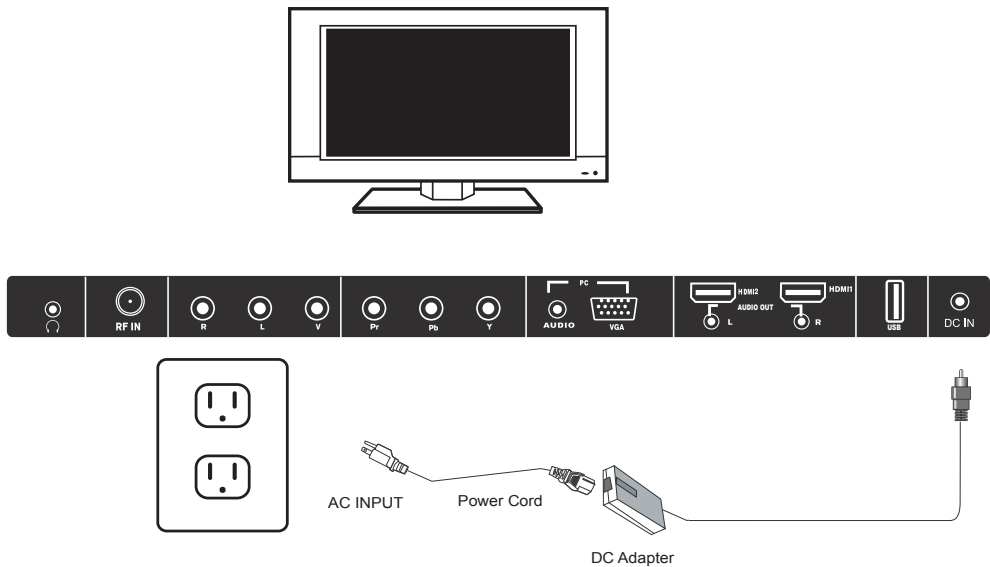


Basic Connection

Coaxial / RF Cable / Antenna



Connect Power Cord



Press the **POWER** button on the remote control to turn on the TV

Turn to page 18 of the User Manual to select your TV signal source and channels (if needed).

QUICK START GUIDE



Simple Steps for Connecting your TV to A/V Devices



IMPORTANT NOTE:
During setup, do NOT run the “Channel Auto Scan” function if your TV is connected to a Cable or Satellite set top box.

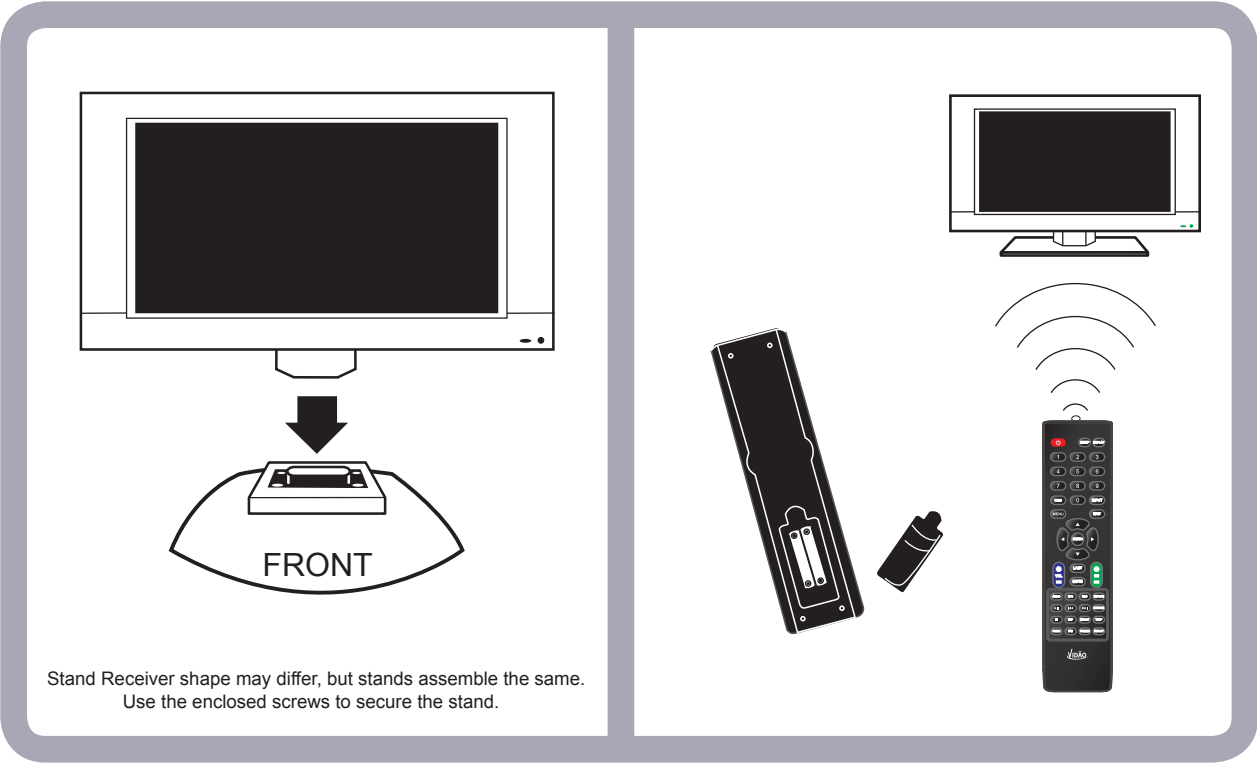
See page 18 of the User Manual for additional details on this setup step.

- A/V Devices Include:**
- Blu-Ray® Disc Players
 - DVD Players
 - Cable, Satellite, or Set-Top Boxes
 - VCRs
 - Game Consoles

If you need additional help, please consult your user manual.

“HDMI”, the HDMI Logo and High-Definition Multimedia Interface are trademarks or registered trademarks of HDMI Licensing LLC.”
“Blu-ray Disc” is a trademark of Blu-ray Disc Association, registered in the U.S. and other countries. All other trademarks are the property of their respective owners.

**Insert TV into Stand Receiver and
Install Batteries in Remote Control**

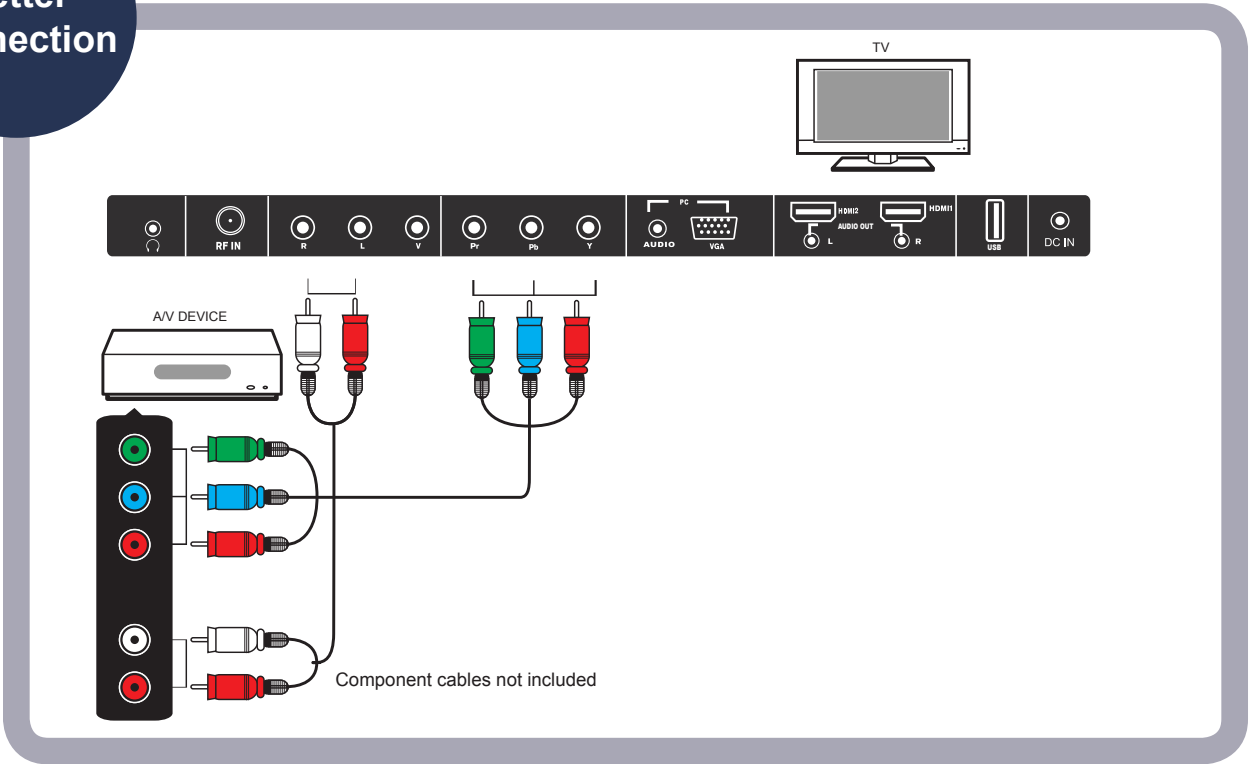


To operate this TV using the remote control provided by your Cable / Satellite provider, follow the programming instructions included with the providers' remote control and input the following codes when prompted;

- For Comcast or DirecTV remote controls, input the code- 10030.
- For AT&T (U-verse) remote Controls, input the code- 1043.
- For RCA Universal Remote Controls, input the code- 0030.

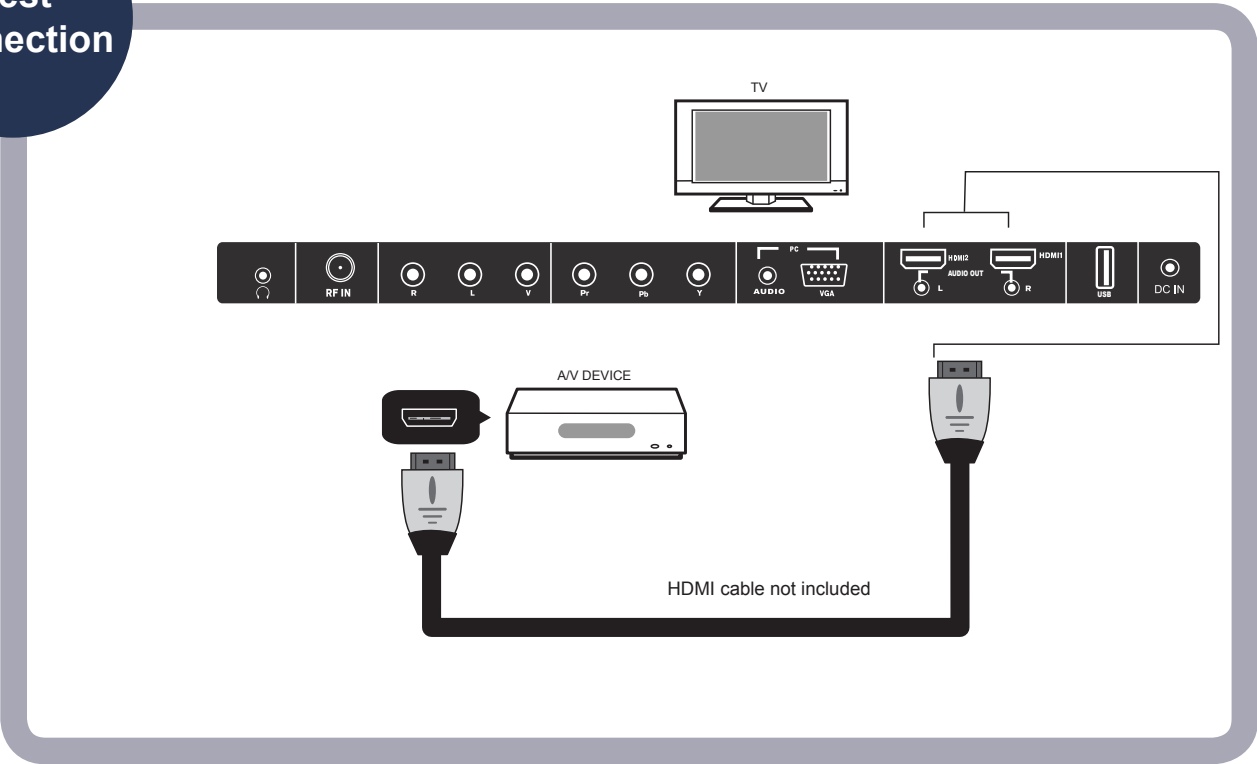
**Better
Connection**

Component



**Best
Connection**

HDMI



**Good
Connection**

Composite

